



**unicef**   
for every child

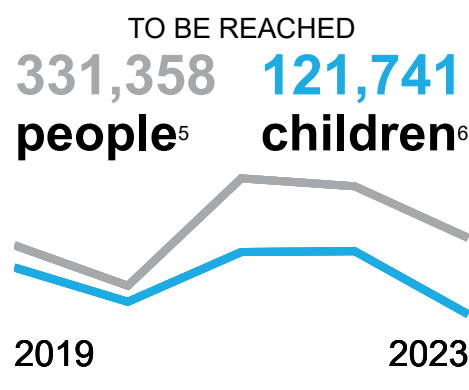
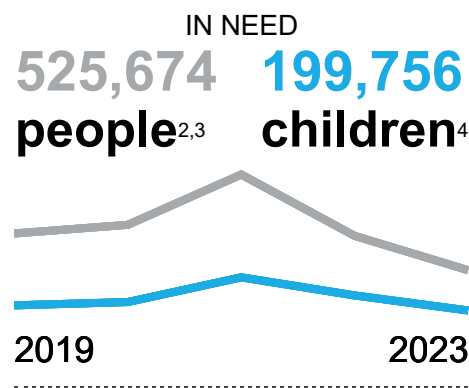
## Humanitarian Action for Children

An infant receives routine vaccination at a UNICEF-supported primary health care centre in Tripoli, Libya during a national immunization campaign against polio.

# Libya

### HIGHLIGHTS<sup>1</sup>

- The protracted political crisis and past conflict in Libya have had a significant impact on public services, particularly health, social protection and education services. UNICEF estimates that nearly 526,000 people (including nearly 200,000 children) require humanitarian assistance in 2023, with children on the move being the most vulnerable.
- UNICEF will work with government counterparts, civil society organizations and the private sector to realize its humanitarian, development and peacebuilding strategy, while maintaining capacity for a rapid response at the onset of emergencies.
- In 2023, UNICEF and partners require US\$28.6 million to undertake essential humanitarian interventions, with critical funding needs in the child protection, social protection, water, sanitation and hygiene (WASH) and education sectors.



### KEY PLANNED TARGETS



**172,204**  
children/caregivers accessing community-based mental health and psychosocial support



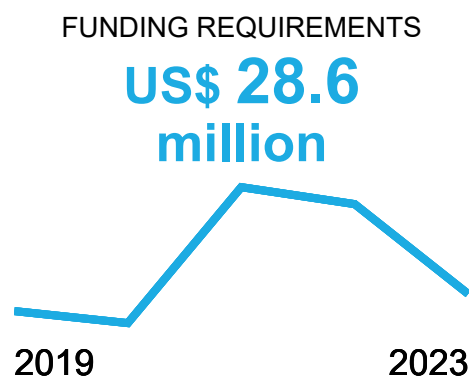
**93,088**  
children accessing formal or non-formal education, including early learning



**50,000**  
people accessing a sufficient quantity and quality of water



**3,000**  
households reached with UNICEF-funded humanitarian cash transfers



Figures are provisional and based on the 2022 Humanitarian Needs Overview, and subject to change upon finalization of the inter-agency 2023 planning documents.

## HUMANITARIAN SITUATION AND NEEDS

Despite the optimism generated by the success of the peace process in 2020, and the formation of the Government of Libyan National Unity in 2021, Libya continues to face a fragile security situation and uncertain political landscape, which have heightened the risk of violence in the country. The protracted and complex humanitarian crisis in Libya is marked by armed hostilities, political fragmentation, economic challenges and the effects of climate change, all of which threaten the lives and well-being of the population. The Libyan economy has suffered significantly from a decade of violent conflict, and estimated gross domestic product per capita in 2021 was about half that of 2010.<sup>9</sup> The war in Ukraine, by creating shortages and increasing food prices, has the potential to worsen food security in Libya. At the same time, confrontations among armed groups, global economic challenges and human rights violations persist throughout the country.

UNICEF estimates that nearly 526,000 people, including nearly 200,000 children, require humanitarian aid. The situation is particularly dire for those who have been forcibly evicted; for families with adults or children with disabilities or chronic diseases; for female-headed households; and for those whose coping capacities have been overstretched due to prolonged displacement. Out of the total number of people in need, nearly 247,400 people lack access to safe water, sanitation and hygiene services; more than 175,800 children are in need of immediate protection; and nearly 111,400 children will lose access to learning opportunities without humanitarian assistance.

Despite conflict and instability, Libya remains a both a destination and a route to Europe for asylum-seekers and migrants. Libya hosts approximately 650,000 migrants and refugees, among them 78,000 children. In addition, the country is home to approximately 160,000 internally displaced people.<sup>8</sup> Benghazi, Misrata, Tripoli and Sirt host the largest migrant/refugee populations in the country.<sup>7</sup> In the absence of effective border control, refugees and migrants, especially women and children coming from mixed migration flows, are exposed to various harms and protection risks created by smuggling networks and other criminal activities. Considering this situation, migrants and refugees, settled or in transit, make up one of the most vulnerable population groups in the country and face specific humanitarian and protection challenges (e.g., dire detention conditions, family separations and other hardships).

## SECTOR NEEDS



**525,674**  
people in need of health assistance<sup>10</sup>



**175,841**  
children in need of protection services<sup>11</sup>



**111,387**  
children in need of access to school<sup>12</sup>



**247,398**  
people lack access to WASH services<sup>13</sup>

## STORY FROM THE FIELD



“I love playing here, and I love my English teacher, she is super helpful, and she always smiles.”

Eight-year-old Maria<sup>14</sup> fled in 2020 with her sister and separated mother from conflict in the Syrian Arab Republic to Libya.

When they arrived in Misrata, her mother tried to enrol them both in public school. However, without legal documents and sufficient financial resources, this was not possible.

Maria and her sister were referred to the UNICEF non-formal education programme, where Maria attends psychosocial support activities in addition to English, math and Arabic classes.

**[Read more about this story here](#)**

A young girl from Benghazi participates in a non-formal education programme offered at a Baity Centre, one of a number of such centres supported by UNICEF.

## HUMANITARIAN STRATEGY

In Libya, UNICEF's priority is to provide immediate life-saving assistance to the most vulnerable people, including internally displaced people and refugees and migrants, settled or in transit, with a special focus on the needs of women and children. UNICEF's humanitarian strategy is aligned with national priorities as identified in the country programme document, the United Nations Sustainable Development Cooperation Framework and other inter-agency initiatives. Guided by the Core Commitments for Children in Humanitarian Action, as well as Humanitarian-Development-Peace Nexus and Grand Bargain<sup>15</sup> commitments, UNICEF supports building resilience and reducing vulnerabilities in Libya, as well as the country's humanitarian transition. UNICEF works to ensure that all children in Libya, regardless of their nationality, legal status and place of residence, have access to life-saving assistance.

UNICEF prioritizes localization of the humanitarian response by promoting partnerships with local actors and building their capacities to provide quality, equitable and gender-informed humanitarian assistance. UNICEF collaborates with line ministries, municipalities, non-governmental organizations and private sector actors and engages communities, especially youth and adolescents, in its humanitarian operations. UNICEF participates in inter-agency coordination mechanisms by leading the water, sanitation and hygiene (WASH) and education sectors and the child protection subsector, and also supports the nutrition working group. Additionally, UNICEF works with United Nations agencies to deliver immediate life-saving supplies to families through the Rapid Response Mechanism, particularly in hard-to-reach areas. Essential emergency goods are pre-positioned to ensure a rapid response to emergency situations.

UNICEF will facilitate access to sustainable safe water services and improved wastewater and sanitation services, including in schools, health facilities and detention centres. Beyond supporting delivery of immediate humanitarian assistance by providing health and nutrition supplies and equipment, UNICEF also will build capacities of health systems and health-care workers to ensure continued delivery of essential health services, with a special focus on the needs of children, including newborns and pregnant and breastfeeding mothers. As a result of UNICEF's interventions, the national health system will be more prepared for future disease outbreaks and health emergencies. UNICEF will continue to support the operations of community centres and the provision of child protection and educational services. Cross-sectoral and integrated programming will be central to UNICEF's humanitarian response. Integrated health and education interventions will target key vulnerable/neglected populations and host community members. Child protection interventions will focus on building risk-informed systems, through finalized inter-agency standard operating procedures, for case management systems<sup>16</sup> covering Libyans and non-Libyans.

Progress against the latest programme targets is available in the humanitarian situation reports: <https://www.unicef.org/appeals/libya/situation-reports>

## 2023 PROGRAMME TARGETS



### Health

- **174,050** children and women accessing primary healthcare in UNICEF-supported facilities<sup>17</sup>



### Nutrition

- **40,000** primary caregivers of children 0-23 months receiving infant and young child feeding counselling
- **25,500** children 6-59 months receiving micronutrient powder
- **13,600** pregnant women receiving preventative iron supplementation



### Child protection, GBViE and PSEA

- **172,204** children, adolescents and caregivers accessing community-based mental health and psychosocial support<sup>18</sup>
- **17,550** women, girls and boys accessing gender-based violence risk mitigation, prevention and/or response interventions
- **4,000** people with safe and accessible channels to report sexual exploitation and abuse by personnel who provide assistance to affected populations
- **22,685** children who have received individual case management
- **469,273** children and adults accessing explosive weapons-related risk education



### Education

- **93,088** children accessing formal or non-formal education, including early learning<sup>19</sup>
- **96,241** children receiving individual learning materials



### Water, sanitation and hygiene

- **50,000** people accessing a sufficient quantity and quality of water for drinking and domestic needs
- **112,567** people reached with critical WASH supplies
- **30,549** people accessing appropriate WASH facilities and hygiene services in learning facilities, safe spaces and healthcare facilities



### Social protection

- **3,000** households reached with UNICEF-funded humanitarian cash transfers



### Cross-sectoral (HCT, SBC, RCCE and AAP)

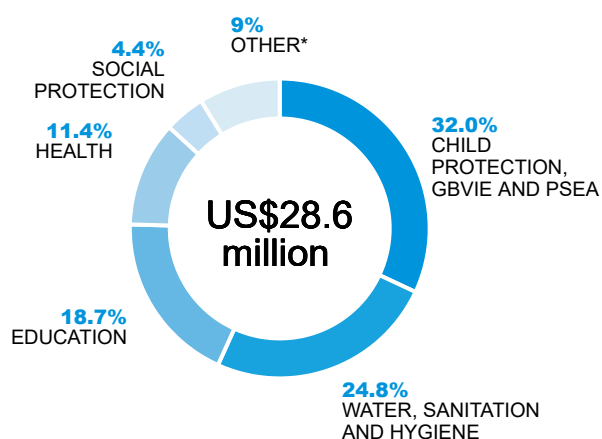
- **5,000** people sharing their concerns and asking questions through established feedback mechanisms



## FUNDING REQUIREMENTS IN 2023

In 2023, UNICEF requires US\$28.6 million to provide children and families in Libya with life-saving humanitarian assistance. These funds will help UNICEF to maintain key health and nutrition programmes for 174,000 women and children and provide essential WASH supplies to 112,500 people. UNICEF aims to reach 469,000 children and caregivers with essential mental health and psychosocial support and other critical specialized child protection services, and to ensure that 96,000 children have access to learning opportunities. UNICEF will also provide support to the transition from humanitarian to development assistance.

Funding requirements for 2023 have substantially decreased due to the incorporation of the coronavirus disease 2019 (COVID-19) response into the country office's development programme. Child protection, social protection, WASH and education are UNICEF's top priorities for 2023. Critical financing is still required for health and nutrition, social protection, emergency preparedness and accountability to affected populations. Inadequate funding will hinder UNICEF's ability to respond to the vital needs of the most vulnerable children and their families, making violations of their rights more likely.



\*This includes costs from other sectors/interventions : Emergency preparedness (3.5%), Nutrition (3.0%), Cluster coordination (1.0%), Evaluation (<1%), Cross-sectoral (HCT, SBC, RCCE and AAP) (<1%).

Sector	2023 requirements (US\$)
Health	3,250,000
Nutrition	864,000
Child protection, GBViE and PSEA	9,134,351 <sup>20</sup>
Education	5,333,402
Water, sanitation and hygiene	7,087,256
Social protection	1,260,000 <sup>21</sup>
Cross-sectoral (HCT, SBC, RCCE and AAP)	72,000 <sup>22</sup>
Emergency preparedness	1,000,000 <sup>23</sup>
Cluster coordination	300,000
Evaluation	275,344 <sup>24</sup>
<b>Total</b>	<b>28,576,353</b>

### Who to contact for further information:

**Michele Servadei**  
Representative, Libya  
T +218 91 200 0471  
mservadei@unicef.org

**Manuel Fontaine**  
Director, Office of Emergency Programmes (EMOPS)  
T +1 212 326 7163  
mfontaine@unicef.org

**June Kunugi**  
Director, Public Partnerships Division (PPD)  
T +1 212 326 7118  
jkunugi@unicef.org

## ENDNOTES

1. COVID-19 remains a Public Health Emergency of International Concern as declared by the World Health Organization in January 2020. On 1 July 2022, UNICEF deactivated its Level 3 Sustained Phase for the global COVID-19 pandemic response. All activities related to COVID-19 pandemic response, including programme targets and funding requirements, have been shifted into regular development programming and operations. While UNICEF's Level 3 emergency response phase of the COVID-19 pandemic was deactivated, the organization is continuing to respond to the COVID-19 pandemic and its impact on children, their families and their communities and on the social systems they rely on.
2. Figures are provisional and based on the 2022 Humanitarian Needs Overview, and are subject to change upon finalization of the inter-agency planning documents.
3. UNICEF is committed to needs-based targeting, which means covering the unmet needs of children; and will serve as the provider of last resort where it has cluster coordination responsibilities.
4. Figures are provisional and based on the 2022 Humanitarian Needs Overview, and are subject to change upon finalization of the inter-agency planning documents.
5. This was calculated using the highest coverage programme targets for children receiving individual learning materials (96,241); children under 5 years to be reached with nutrition support (25,500); women to be reached with health-care interventions (97,050); and people reached with critical WASH supplies (112,567). This includes 170,194 women/girls and 163,519 men/boys. The 2022 Humanitarian Needs Overview estimated that 15 per cent of the population is living with a disability; a specific estimation for children with disabilities is not available. UNICEF is committed to needs-based targeting, which means covering the unmet needs of children; and will serve as the provider of last resort where it has cluster coordination responsibilities.
6. This was calculated using the highest coverage programme targets children for under 5 years to be reached with nutrition support (25,500) and children receiving individual learning materials (96,241). This includes 62,088 girls and 59,653 boys. The 2022 Humanitarian Needs Overview estimated that 15 per cent of the population is living with a disability; a specific estimation for children with disabilities is not available. UNICEF is committed to needs-based targeting, which means covering the unmet needs of children; and will serve as the provider of last resort where it has cluster coordination responsibilities.
7. Ibid.
8. International Organization for Migration, Displacement Tracking Matrix, Libya, available at <<https://dtm.iom.int/libya>>.
9. World Bank, Libya Economic Monitor: Summer 2022, International Bank for Reconstruction and Development/The World Bank, Washington, DC, 2022, available at <[www.worldbank.org/en/country/libya/publication/libya-economic-monitor-september-2022](http://www.worldbank.org/en/country/libya/publication/libya-economic-monitor-september-2022)>.
10. Figures are provisional and based on the 2022 Humanitarian Needs Overview, and are subject to change upon finalization of the inter-agency planning documents and the 2022 Multi-sectoral Needs Assessment (MSNA).
11. Figures are provisional and based on the 2022 Humanitarian Needs Overview, and are subject to change upon finalization of the inter-agency planning documents and the 2022 Multi-sectoral Needs Assessment (MSNA).
12. Figures are provisional and based on the 2022 Humanitarian Needs Overview, and are subject to change upon finalization of the inter-agency planning documents and the 2022 Multi-sectoral Needs Assessment (MSNA).
13. Figures are provisional and based on the 2022 Humanitarian Needs Overview, and are subject to change upon finalization of the inter-agency planning documents and the 2022 Multi-sectoral Needs Assessment (MSNA).
14. This name has been changed to maintain confidentiality.
15. UNICEF is committed to empowering local responders in humanitarian crises in a variety of ways. The revised Core Commitments made investing in strengthening the capacities of local actors in the humanitarian response a mandatory benchmark for UNICEF action. A more localized response will improve humanitarian action and is fundamental to achieving better accountability to affected populations.
16. UNICEF will work to improve both safety and accessibility of services by mitigating gender-based violence risks, including through protection from sexual exploitation and abuse.
17. The target is estimated based on the number of women and children to benefit from 50 health facilities supported by UNICEF.
18. The United Nations Office for the Coordination of Humanitarian Affairs (OCHA) Multi-sectoral Needs Assessment has not been finalized at the time of drafting the Humanitarian Action for Children appeal. Figures from the 2022 Humanitarian Needs Overview, subtracting the needs due to COVID-19, underpin the drastic decrease in need from 2022. Figures are provisional and subject to change upon finalization of the inter-agency planning documents.
19. The OCHA Multi-sectoral Needs Assessment has not been finalized at the time of drafting this Humanitarian Action for Children appeal. Figures from the 2022 Humanitarian Needs Overview, subtracting the needs due to COVID-19, underpin the drastic decrease in need from 2022. Figures are provisional and subject to change upon finalization of the inter-agency planning documents.
20. This includes US\$100,000 for activities for the prevention of sexual exploitation and abuse.
21. Due to the change in exchange rate of the Libyan dinar to the United States dollar, the value in US dollars of the minimum expenditure basket per household has decreased.
22. Funding has decreased compared with 2022 due to the removal of risk communication and community engagement.
23. Preparedness covers capacity building of local civil society organizations and government institutions, along with the pre-positioning of supplies to reach 20 per cent of the anticipated affected population under the most likely scenario where an estimated 250,000 people would be affected by conflict.
24. One per cent of programme expenditure is dedicated to the evaluation of the humanitarian response. This supports the accountability function of UNICEF and will enable the organization to draw lessons that can be used for improving future programming and implementation.